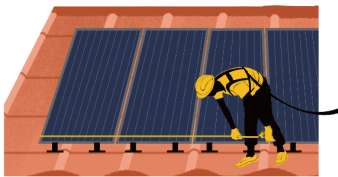


## Contents

- 1 roll solar panel mesh (30mts)
- 100 units of J-hook
- 100 units of Speed Washer

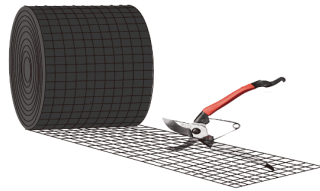
## How to install (when side installation)

### Step 1



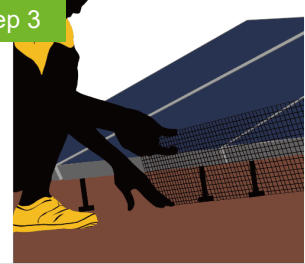
Measure the length of solar panel with a tape measure.

### Step 2



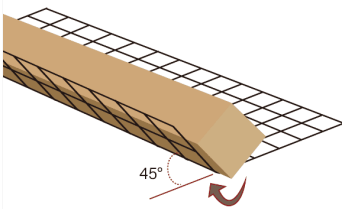
Cut the solar panel mesh according to the panel length with a wire cutter.

### Step 3



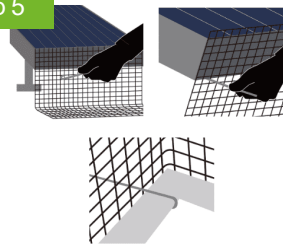
Compare the height of the solar panel and the solar panel mesh.

### Step 4



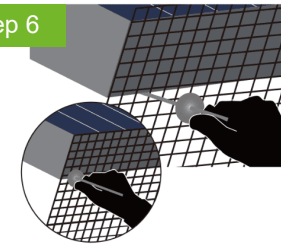
Fold the extra height of solar panel mesh at 45 degree with a square wooden rod.

### Step 5



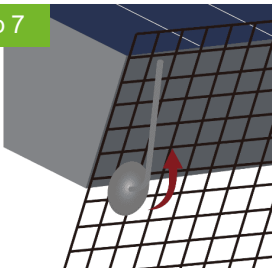
Put the hook side of J-hook through the mesh, and hook it to the panel frame

### Step 6



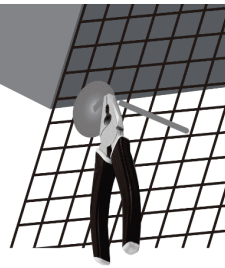
Sleeve the speed washer through the rod of J-Hook, then tighten it against the mesh.

### Step 7



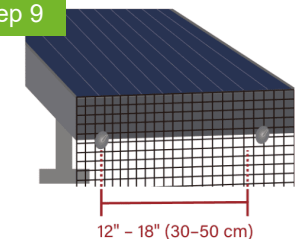
Bend the J-hook rod upwards with hands.

### Step 8



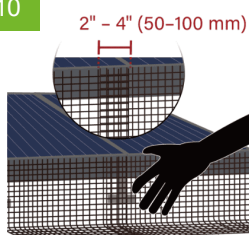
Cut off the excess portion of the J-hook rod with pliers.

### Step 9



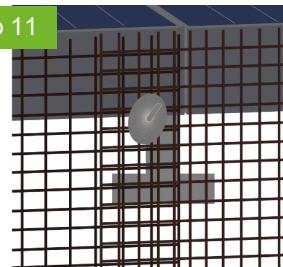
Attach J-hooks approximately every 12" – 18" (30 cm – 50 cm).

### Step 10



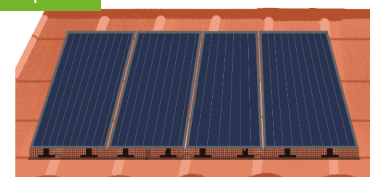
Overlap about 2" – 4" (50 mm – 100 mm) when start a new piece of mesh.

### Step 11



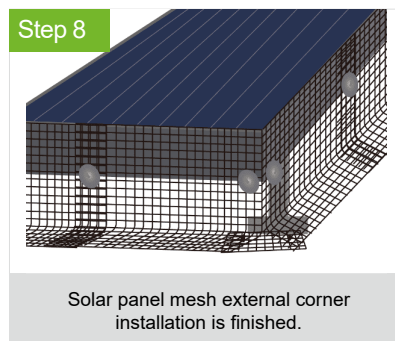
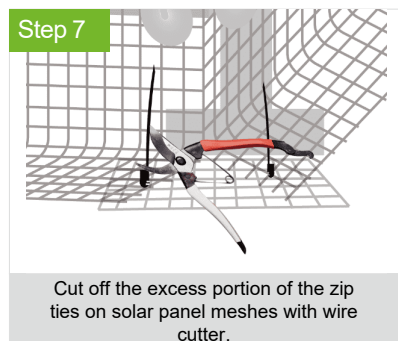
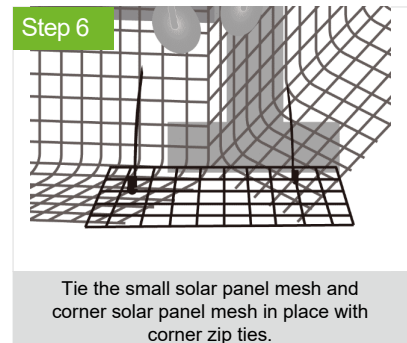
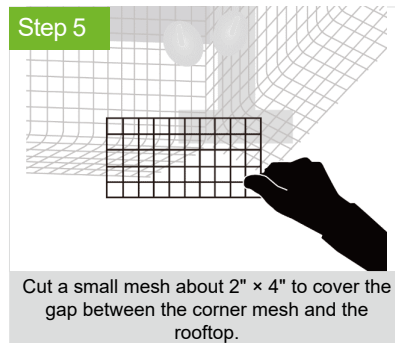
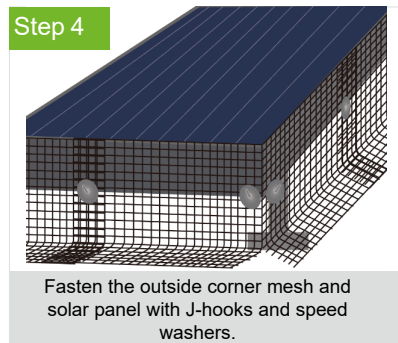
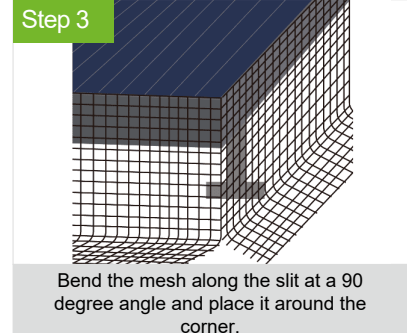
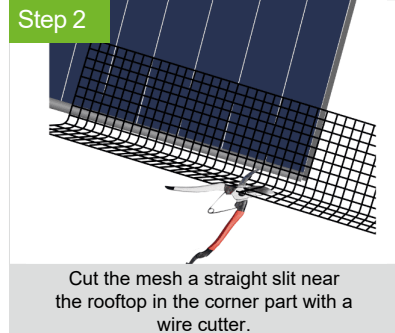
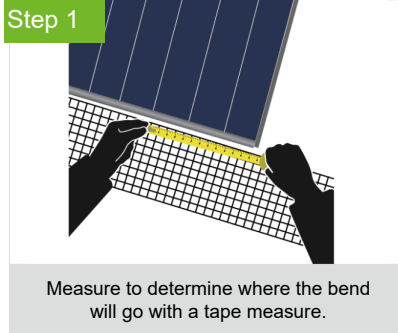
Add J-hook and secure speed washer to fix overlapping meshes according to step 5-8.

### Step 12



Solar panel meshes straight side installation is finished on rooftop.

## How to install (when external corner installation)



## How to install (when internal corner installation)

